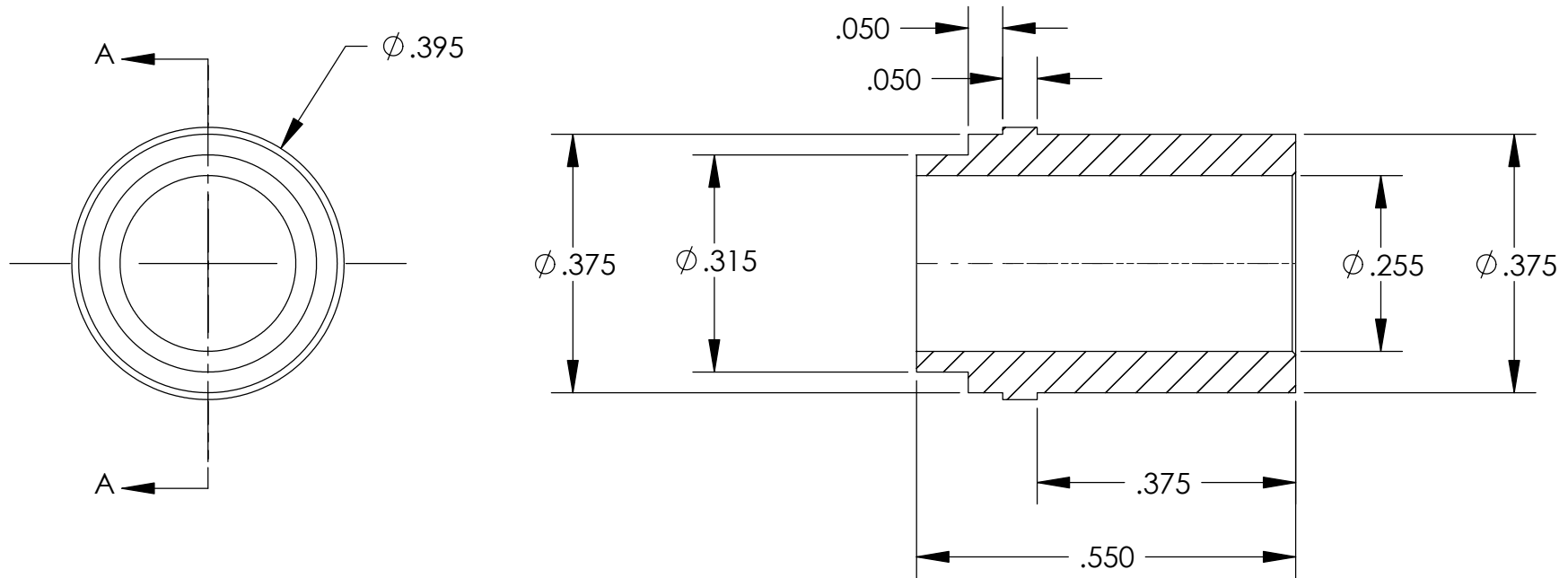
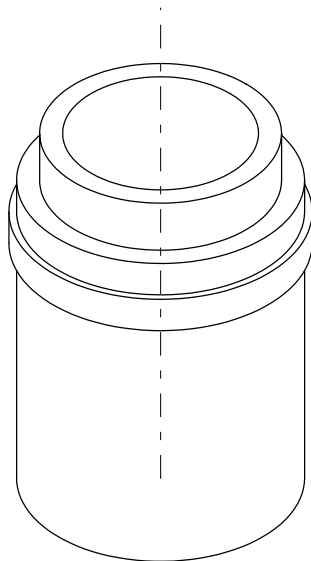


REVISIONS		
REV	DESCRIPTION	DATE
B	Changed OD from .425 to .375	1/14/2004



- NOTES:
1. MAKE FROM 1/4" SCH 80 SEAMLESS PIPE.
 2. .255 TO FIT OD OF P/N -124.
 3. .375 DIA TO FIT BORE OF P/N -177.
 4. .315 DIA TO FIT ID OF P/N -181.
- SECTION A-A



UNLESS OTHERWISE SPECIFIED:		<div>High Precision Devices</div> <div>1668 Valtac Lane, Suite C, Boulder, Colorado 80301 Phone: (303) 447-2558 Fax: (303) 447-2548 Web Site: www.hpd-online.com</div>				
DIMENSIONS ARE IN INCHES DECIMAL TOLERANCES: .X ±.030 .XX ±.015 .XXX ±.005						
ANGULAR TOL: ± 1° SURFACE ROUGHNESS:63/√						
INTERNAL AND EXTERNAL SURFACE INTERSECTIONS SHALL BE UNIFORMLY FINISHED WITH CHAMFER .005/.010 X 45° OR RADIUS .005/.010. CHAMFER ALL THREADED HOLES 110° OF MAJOR DIAMETER X 45°		TITLE: <div>p02101-186 weld adapter</div>				
		CONFIGURATION: 00-Default				
MATERIAL:	304 SST	SIZE	QTY PER ASSM: 1	SCALE: 4:1	SHEET 1 OF 1	REV
FINISH:	NONE	A	DATE: 5/26/2004	DRAWN BY: C. Danaher		B