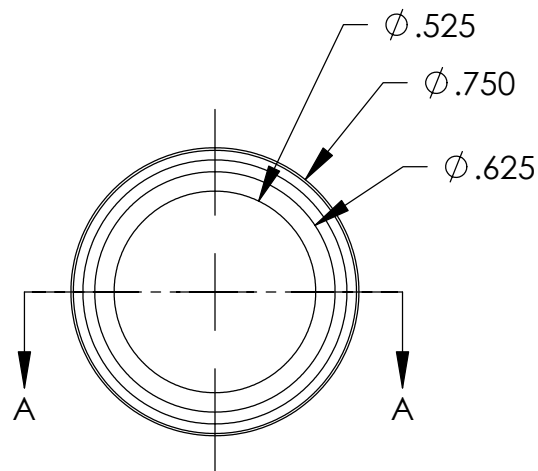
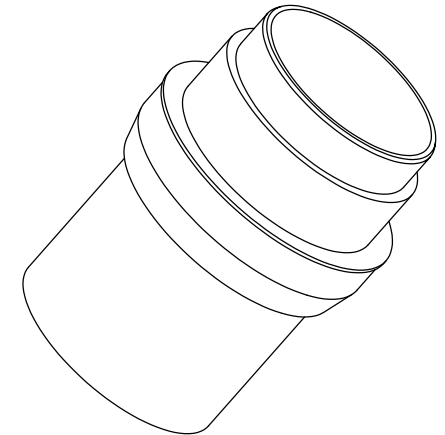
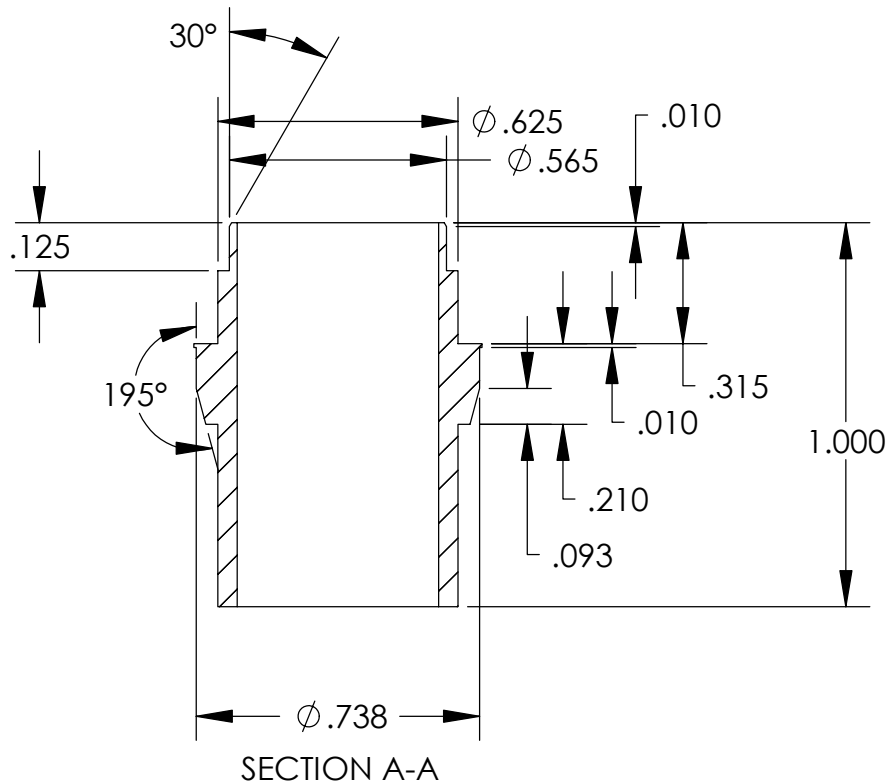


REVISIONS		
REV	DESCRIPTION	DATE
B	REMOVED WELD PREP FOR TUBE	6/3/2003



NOTES:

1. MAKE FROM 1/2" SCH 160 PIPE.
2. .565" TO BE CLOSE SLIP FIT WITH ID OF -083, -084, -085 & -086.
3. .738 TO BE LIGHT PRESS FIT WITH ID OF BELLOWS (SEE ASSY -242).

UNLESS OTHERWISE SPECIFIED:

DIMENSIONS ARE IN INCHES
DECIMAL TOLERANCES:

.X ±.030 .XX ±.015 .XXX ±.005

ANGULAR TOL: ± 1° SURFACE ROUGHNESS: 63/

INTERNAL AND EXTERNAL SURFACE
INTERSECTIONS SHALL BE UNIFORMLY
FINISHED WITH CHAMFER .005/.010 X 45°
OR RADIUS .005/.010.
CHAMFER ALL THREADED HOLES 110° OF
MAJOR DIAMETER X 45°

MATERIAL: **304 Stainless Steel**

FINISH: **N/A**

High Precision Devices

1668 Valtac Lane, Suite C, Boulder, Colorado 80301
Phone: (303) 447-2558 Fax: (303) 447-2548 Web Site: www.hpd-online.com

TITLE:

p02101-087 weld adapter, bellows

CONFIGURATION: **0-Default**

SIZE	QTY PER ASSM:	SCALE:	SHEET	OF	REV
A	4	2:1	1	1	B
DATE:	5/19/2004	DRAWN BY:	C. Danaher		