

5

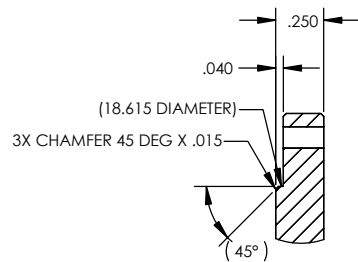
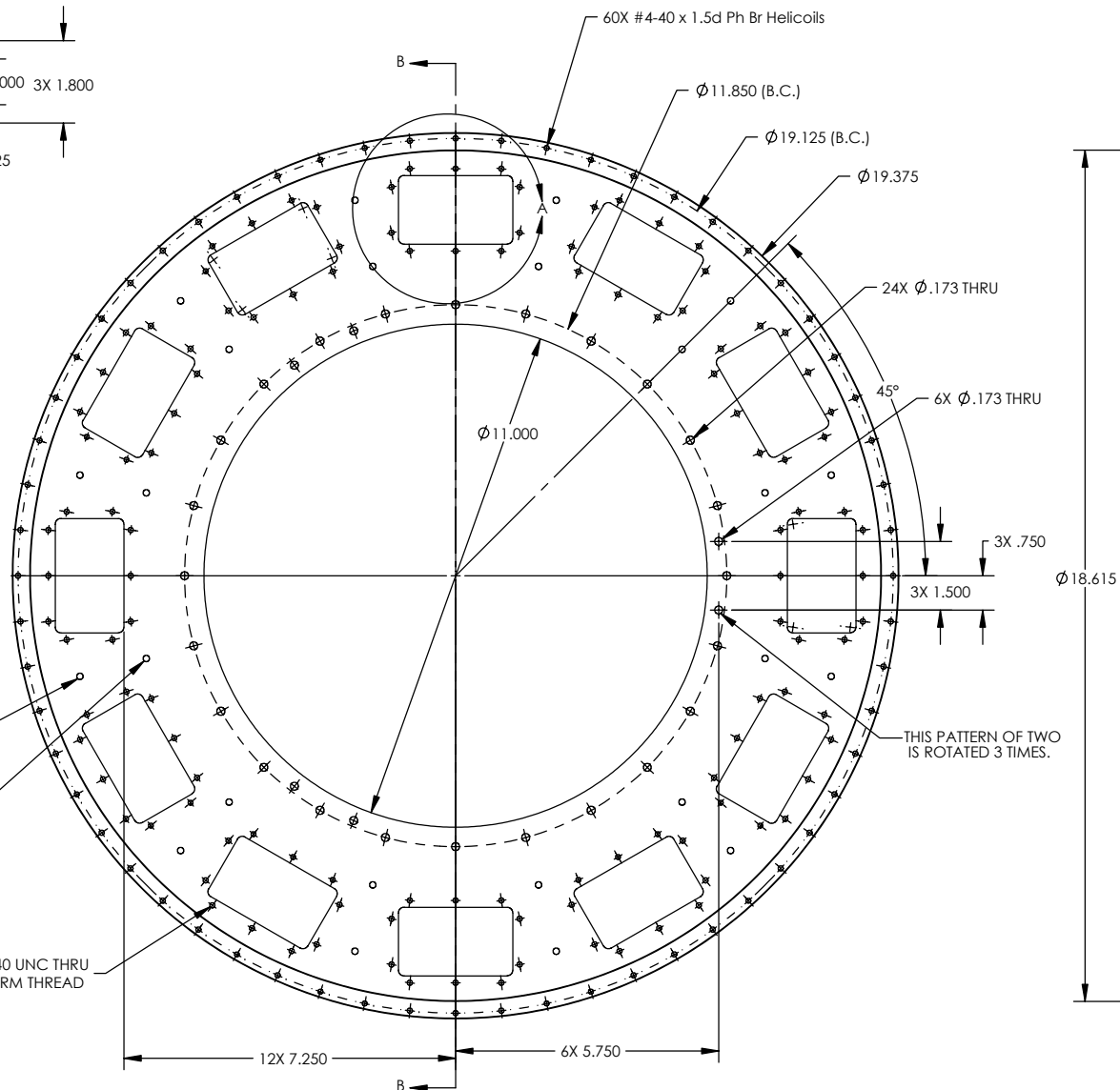
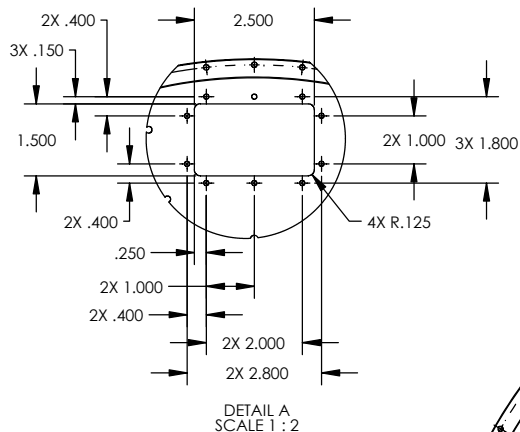
4

3

2

1

REVISIONS			
ZONE	REV	DESCRIPTION	DATE
	B	ADDED DIMENSIONS, DETAILS	6/5/2003
	C	ADDED #6-32 HOLES	6/20/2003



UNLESS OTHERWISE SPECIFIED:

DIMENSIONS ARE IN INCHES

DECIMAL TOLERANCES:

X $\pm .030$ XX $\pm .015$ XXX $\pm .005$ ANGULAR TOL: $\pm 1^\circ$ SURFACE ROUGHNESS: $\sqrt{10}$

INTERNAL AND EXTERNAL SURFACE:

INTERSECTIONS SHALL BE UNIFORMLY

FINISHED WITH CHAMFER .005/.010 X 45°

OR RADIUS .005/.010

CHAMFER ALL THREADED HOLES 110% OF

MAJOR DIAMETER X 45°

MATERIAL: 3003 Aluminum

FINISH: N/A

High Precision Devices

1668 Valtrec Lane, Suite C, Boulder, Colorado 80301
Phone: (303) 447-2558 Fax: (303) 447-2548 Web Site: www.hpd-online.com

TITLE: p02101-100 He container ring

CONFIGURATION: 00-Default

SIZE QTY PER ASSM: 1 SCALE: 1:2 SHEET 1 OF 1 REV

C DATE: 5/17/2004 DRAWN BY: C. Danaher C