

D

C

B

A

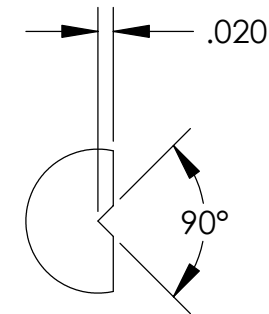
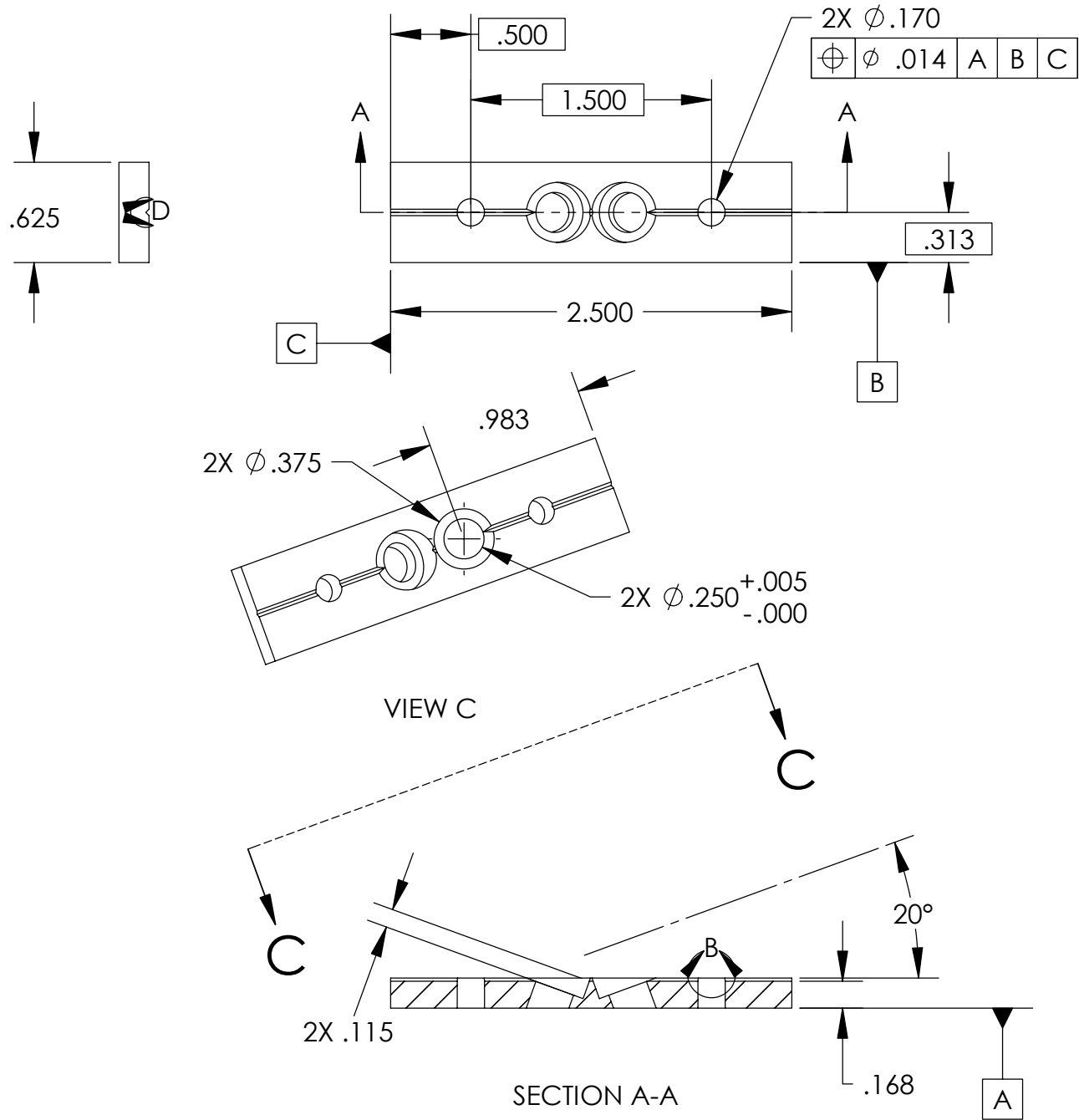
5

4

3

2

1



DETAIL D  
SCALE 4 : 1

- NOTES:
- 1. PART IS SYMMETICAL.
  - 2. 90 DEGREE GROOVE IS FOR VACUUM VENT.
  - 3. VARIATION IN GROOVE SHAPE IS PERMISSIBLE.
  - 4. .983" DIMENSION IS FROM THEORETICAL INTERSECTION/EDGE.
  - 5. .250 HOLES TO BE CLOSE SLIP FIT WITH P/N -143.

UNLESS OTHERWISE SPECIFIED:						<div>High Precision Devices</div> <div>1668 Valtec Lane, Suite C, Boulder, Colorado 80301 Phone: (303) 447-2558 Fax: (303) 447-2548 Web Site: www.hpd-online.com</div>							
DIMENSIONS ARE IN INCHES DECIMAL TOLERANCES: .X ±.030 .XX ±.015 .XXX ±.005													
ANGULAR TOL: ± 1° SURFACE ROUGHNESS <sup>63</sup>						TITLE: <b>p02101-164 plate, triangle support</b>							
INTERNAL AND EXTERNAL SURFACE INTERSECTIONS SHALL BE UNIFORMLY FINISHED WITH CHAMFER .005/.010 X 45° OR RADIUS .005/.010. CHAMFER ALL THREADED HOLES 110% OF MAJOR DIAMETER X 45°													
MATERIAL: <b>304 SST</b>						CONFIGURATION: <b>00-Default</b>							
FINISH: <b>NONE</b>						SIZE <b>B</b>	QTY PER ASSM: <b>6</b>		SCALE: <b>1:1</b>		SHEET <b>1</b> OF <b>1</b>		REV <b>A</b>
						DATE: <b>5/21/2004</b>		DRAWN BY: <b>C. Danaher</b>					